



Multi-point Monitoring Software

RP Monitor Evo10

K1701 Ver.2/Ver.3

- Enables control of particle counters including automatic operation, data collection, data display, filing, and printing
- Tree view is incorporated as a part of UI for easy measurement point selection, measurement parameter setting, and other operations
- Compatible with Windows 10 Pro (64 bit) / 11 Pro (64 bit)



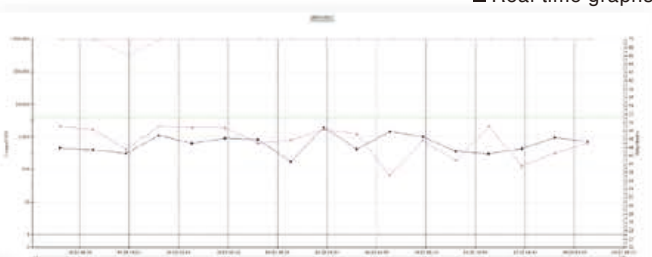
■ Computer validation supported

Measurement data are saved as tamper-proof binary files. Automatic output in CSV format is also possible. HASP hardware key for protection against unauthorized copying

■ Real time graphs

The Event List window displays a table of events. The table has columns for 'Event ID', 'Event Name', 'Event Date', 'Event Time', 'Event User', 'Event Location', 'Event Status', and 'Event Comment'. The table contains several rows of event data.

■ Event window



■ List display

The List display window shows a table of data. The table has columns for 'List Name', 'List ID', 'List Date', 'List Time', 'List User', 'List Location', 'List Status', and 'List Comment'. The table contains several rows of data.

■ Operation log (audit trail)

■ ID and password registration

RP Monitor **Evo10 K1701 Ver.2** (For serial mode)

- Allows control of particle counter measurement start/stop, and light source/internal pump on/off
- Available setting parameters include measurement time, period, number of measurements, alarm, conversion etc.
- Comments can be entered (at the beginning of a measurement or in a history graph)
- Display mode selection allows real-time numeric indication on another computer, separate from the control computer

Allows control of up to 8 particle counters in serial mode, using 8 ports

Supported models

Serial mode

(Control one particle counter via one serial port)

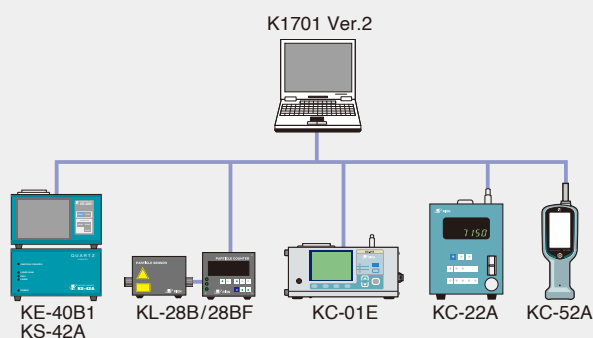
KC-01E, KC-03B, KC-20A, KC-24, KC-52A, KC-31/32, KC-22A/22B, KE-40B1*, KL-28B/28BF, KS-16/16F, KL-30A/30AX/30B

Read-only serial mode

(Receive data for one particle counter via one serial port)

KC-01E, KC-03B, KC-20A, KC-52A, KC-31/32, KC-22A/22B, KE-40B1*, KL-28B/28BF, KL-30A/30AX/30B

*Connectable sensors to KE-40B1 are supported.



Recommended environment Workstation (WS) (for Ver. 2 and Ver. 3)

Supported OS	Windows 11 Pro (64-bit) / Windows 10 Pro (64-bit)
CPU	Intel Core i3 (8th generation) or equivalent processor
Disk Space	Minimum free space required for operation: 20 GB or more. Note: Additional space is required for storing measurement data. Size per measurement point: approximately 200 MB/year
Memory	Windows 11: 8 GB or more Windows 10: 4 GB or more
Hardware	<ul style="list-style-type: none"> CD Drive: Required for software installation. (Please consult if using a PC without a drive) Serial (RS232C) Port: Used for communication with the measurement device. Note: If there are insufficient serial ports, an expansion interface board can be used. It must be compatible with the operating system in use and function as a standard device.) <p>Tested Devices</p> <ul style="list-style-type: none"> CONTEC PCI bus serial communication board COM series RATOC Systems RS-USB602F USB Port: Required for connecting the USB protection key A LAN port may be required as needed (e.g., when connecting a LAN-compatible particle sensor).

* Company names and product names mentioned in this catalog are usually trademarks or registered trademarks of their respective owners.
* Specifications subject to change without notice.

Distributed by:

RP Monitor **Evo10 K1701 Ver.3** (For multi-point monitoring systems)

Allows simultaneous control of up to 31 particle counters in serial mode and multi mode R (expanded connection up to 160 units)

Supported models

Serial mode

Same models are supported by Ver.2.

Read-only serial mode

Same models are supported by Ver.2.

Multi mode (R)

(Using Rion particle counters, continuous repeated measurement without measurement pause intervals is possible)

KC-52A (Communication dock required), KA-02, KA-03, KA-05, KA-82, KC-31M, KL-28B/28BF (Option board required), KS-16/16F, KS-18F (K), KS-19F (K), KS-41A, KS-41B

Manifold mode (R)

(For models supporting a tube type multi-point manifold. Control is performed by manifold switching.)

KC-24

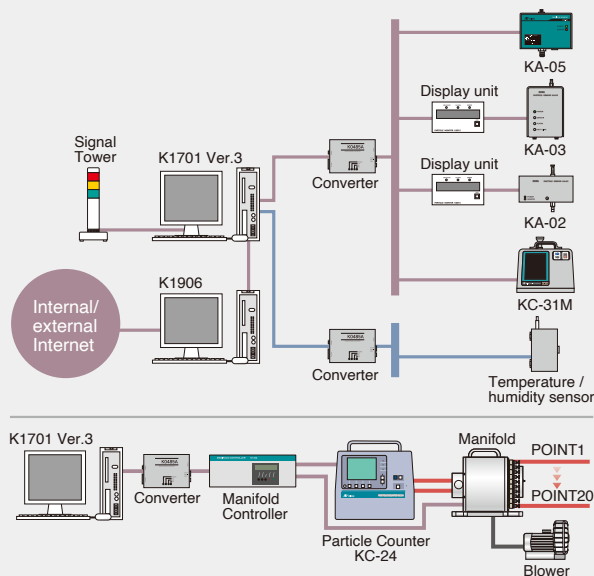
Aerosol mode

(Control thirty-one particle counters via ethernet port)

AES-CKM

Peripheral equipment

Automatic alarm mail delivery system K1906, particle count and alarm status indicator K2015, digital temperature/humidity sensor K1813, signal tower



RION CO., LTD.
<https://www.rion.co.jp/english/>

3-20-41, Higashimotomachi, Kokubunji,
Tokyo 185-8533, Japan
Tel: +81-423-59-7878, Fax: +81-423-59-7445